

MONTHLY MEMBERSHIP PROGRESS REPORT

District 23 A

Results as of: 5/31/2024

GMT:

LOCATION CONNECTICUT

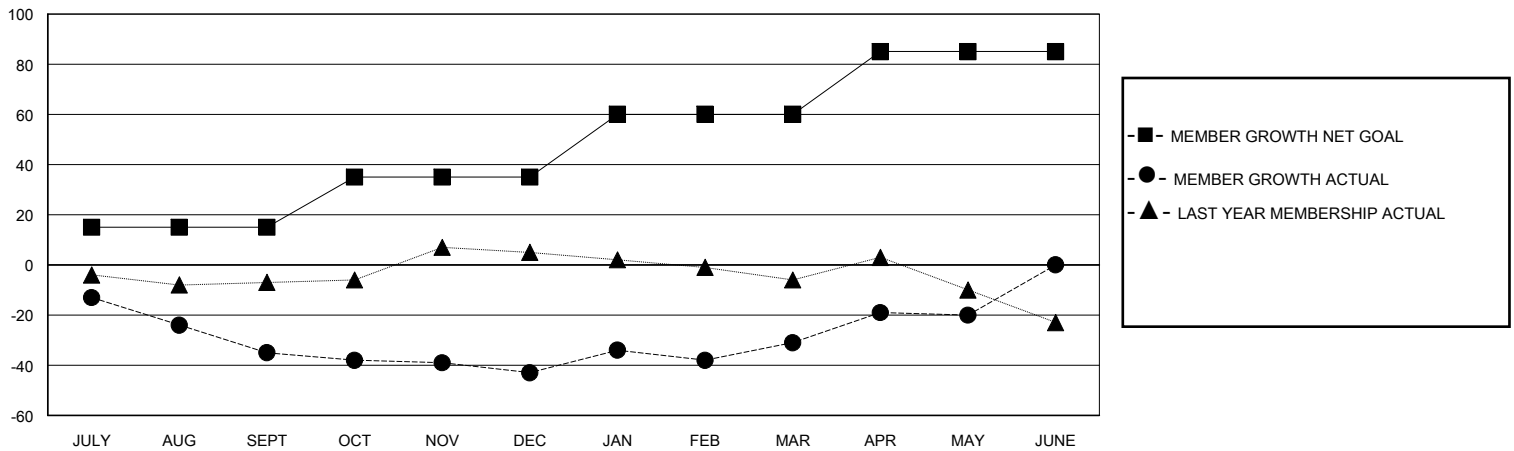
GMT CA

Clubs				Members			
RESULTS FOR 2023-2024				RESULTS FOR 2023-2024			
QUARTER	NEW CLUB GOAL	NEW CLUBS	DROPPED CLUBS	QUARTER	MEMBER GROWTH NET GOAL	MEMBER GROWTH ACTUAL	DROPPED MEMBERS ACTUAL (including transfers)
JULY/AUG/SEPT	0	0	1	JULY/AUG/SEPT	15	26	57
OCT/NOV/DEC	0	0	0	OCT/NOV/DEC	20	42	47
JAN/FEB/MAR	1	0	0	JAN/FEB/MAR	25	34	20
APR/MAY/JUNE	0	0	0	APR/MAY/JUNE	25	27	14

GOALS AND ACTUAL NEW CLUBS CUMULATIVE



GOALS AND ACTUAL MEMBERS CUMULATIVE



DROPPED CLUBS: 1

31 CLUBS OF 47 ADDED 1 OR MORE NEW MEMBERS

GENDER DISTRIBUTION

MALE 776 (61.83%)
FEMALE 479 (38.17%)

DROPPED MEMBERS

DECEASED	19
CLUB CANCELLED	0
OTHER	119
TOTAL	138

[CLICK HERE FOR CUMULATIVE MEMBERSHIP DATA](#)

TOTAL FAMILY UNIT MEMBERS	178
FAMILY MEMBERS PAYING HALF DUES	92